

EPIC WARPATH™

ASSEMBLY INSTRUCTIONS

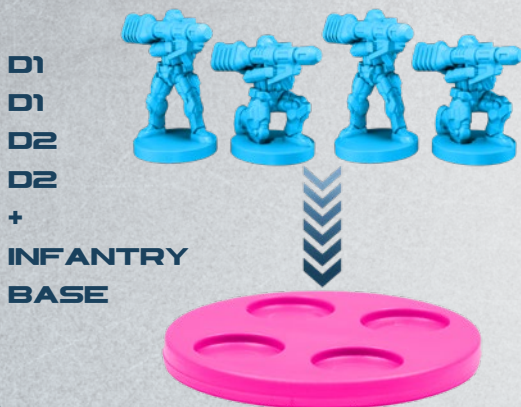
ENFORCER CORE

[FOUND ON PLASTIC FRAMES WITH NUMBERED PARTS]

OPERATIVES



HEAVY WEAPON OPERATIVES



ASSAULT OPERATIVES



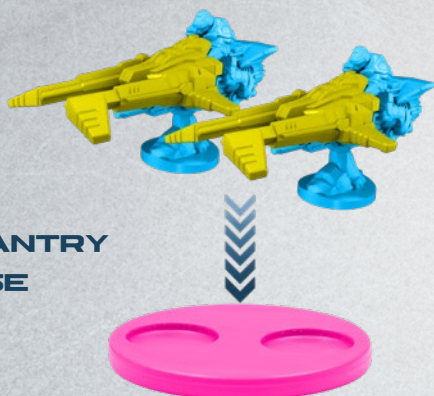
PEACEKEEPERS

F1
F2
+
INFANTRY
BASE



JETBIKES

B1
B2
B1
B2
+
INFANTRY
BASE



PANTHER APC

A1
A2
A3
+
25MM
BASE



PANTHER PUNISHER

A1
A2
A4
+
25MM
BASE



PANTHER MISSILE

A1
A2
A5
+
25MM
BASE



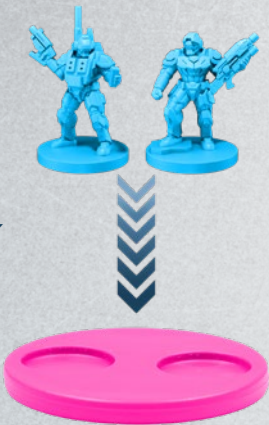
PANTHER MBT

A1
A2
A6
+
25MM
BASE



COMMAND

G1
G2
+
INFANTRY
BASE



EPIC WARPATH™

ENFORCER REINFORCEMENTS

[3D PRINTED OR RESIN PARTS]

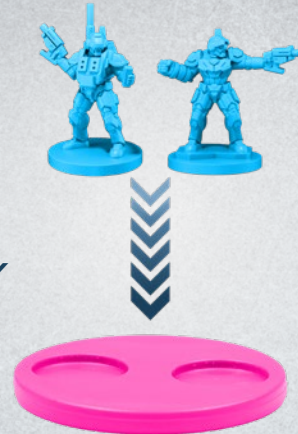
PEACEKEEPER DEFENDERS

2X
PEACEKEEPER
DEFENDERS
+
INFANTRY
BASE



CAPTAIN

G1
+
CAPTAIN
+
INFANTRY
BASE



VICTOR MKII



STRIDER

+
25MM
BASE



PEACEKEEPER CAPTAIN

G1
+
PEACEKEEPER
CAPTAIN
+
INFANTRY
BASE



PATHFINDERS

4X
PATHFINDERS
+
INFANTRY
BASE



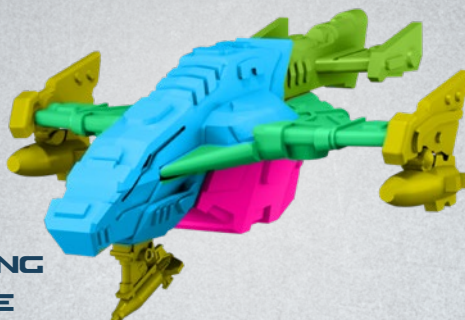
ACCUSER INTERCEPTOR

+
FLYING
BASE



PERSECUTOR BOMBER

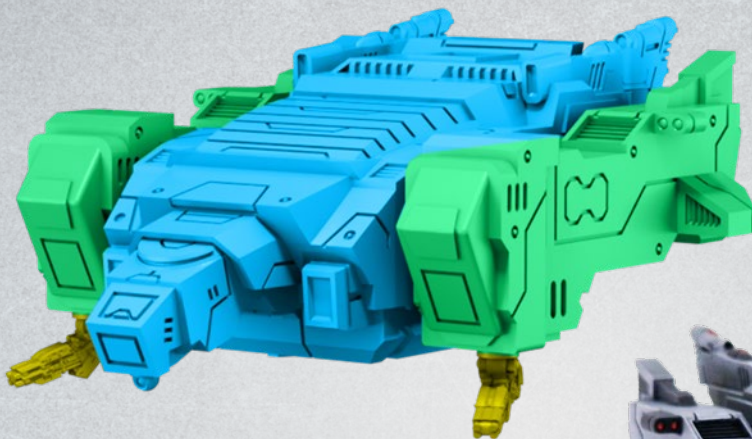
+
FLYING
BASE



ENFORCER SUPER HEAVY

DRAKON

+
FLYING
BASE
+
80MM
BASE



MAVEN IV COMMAND TANK

+
80MM
BASE

