

EPIC WARPATH™

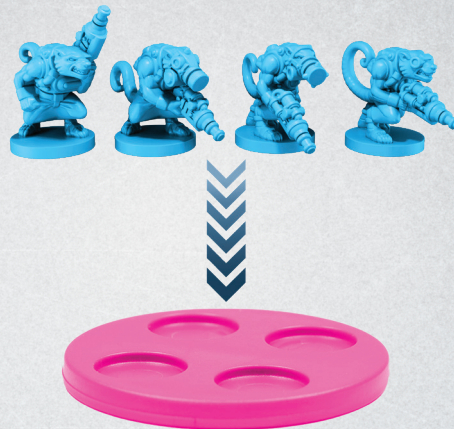
ASSEMBLY INSTRUCTIONS

VEER-MYN CORE

[FOUND ON PLASTIC FRAMES WITH NUMBERED PARTS]

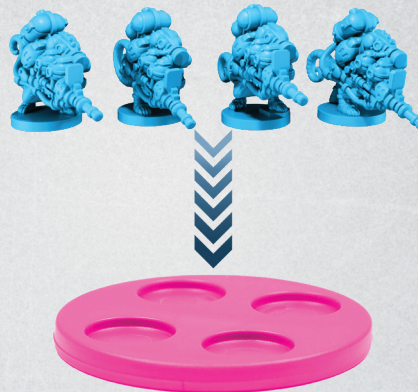
CRAWLERS

A1
A2
A3
A4
+
INFANTRY
BASE



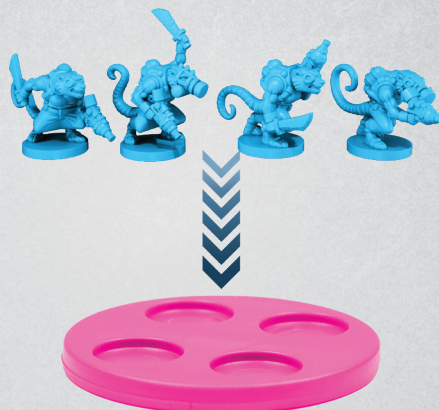
MALIGNUS

B1
B2
B3
B4
+
INFANTRY
BASE



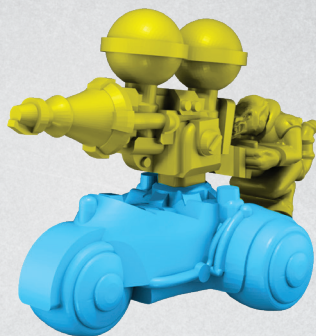
STALKERS

C1
C2
C3
C4
+
INFANTRY
BASE



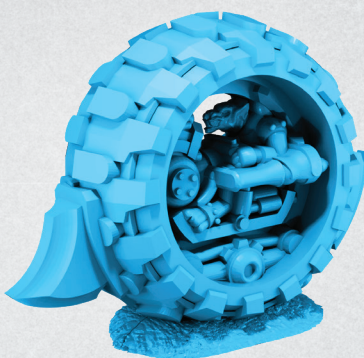
RUMBLER

D1
D2



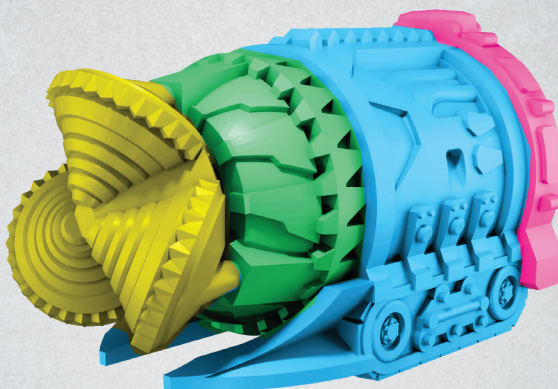
TUNNEL RUNNER

E1
+
25MM
BASE



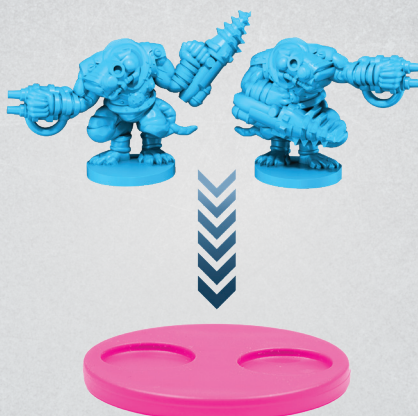
TUNNELER

F1
F2
F3
F4
F5



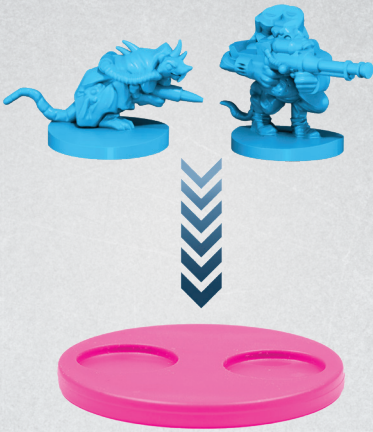
NIGHTMARES

G2
G3
+
INFANTRY
BASE



COMMAND

G1
G4
+
INFANTRY
BASE



EPIC WARPATH™

VEER-MYN REINFORCEMENTS

[3D PRINTED OR RESIN PARTS]

BROOD GUARD

2X BROOD
GUARD
+
INFANTRY
BASE



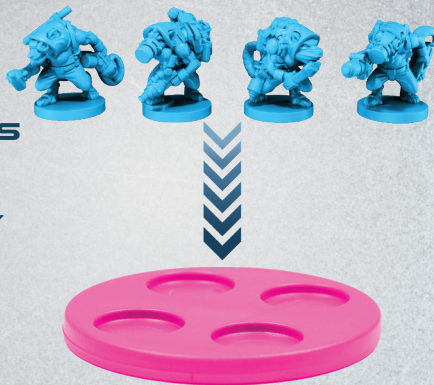
NIGHT TERROR

+
25MM
BASE



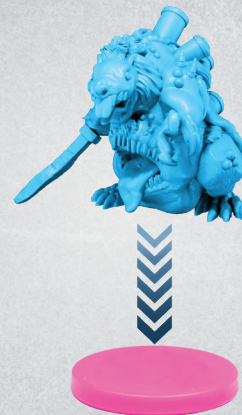
CREEPERS

4X
CREEPERS
+
INFANTRY
BASE



MUTANT RAT FIEND

MUTANT
RAT FIEND
+
25MM
BASE

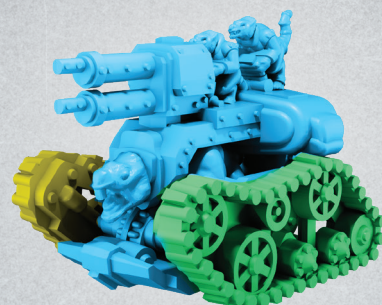


BROOD MOTHER

BROOD
MOTHER
C4
+
INFANTRY
BASE

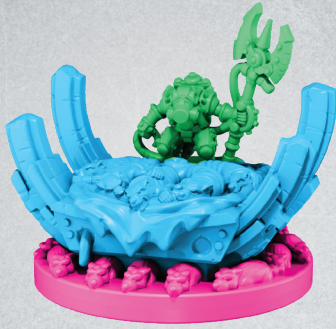


DEATH ENGINE



TANGLE

+
25MM
BASE



VEER-MYN SUPER HEAVIES

THE GREAT UNDERMINER

+
80MM
BASE



TECHNONEST

+
80MM
BASE

