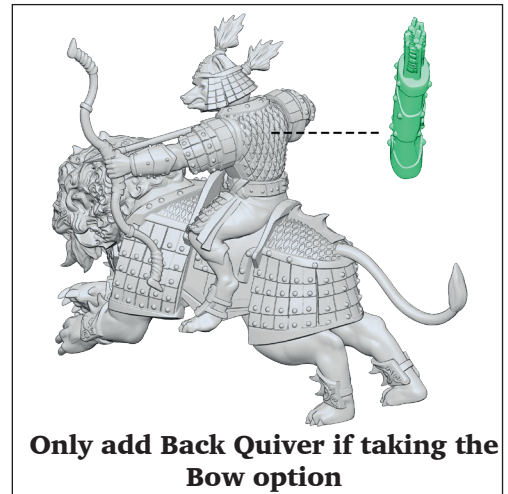
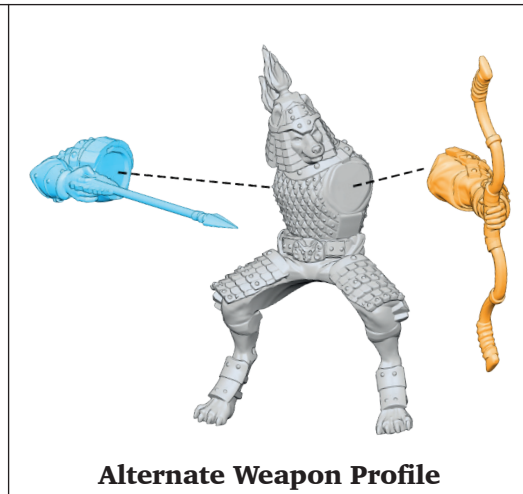
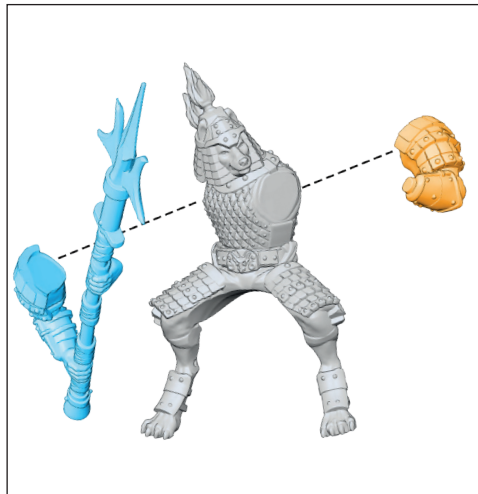
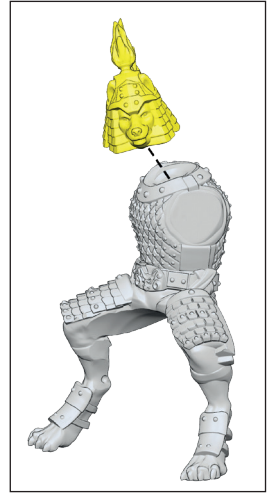
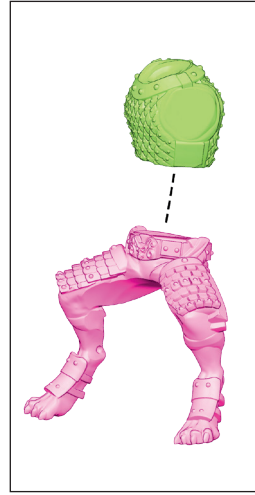
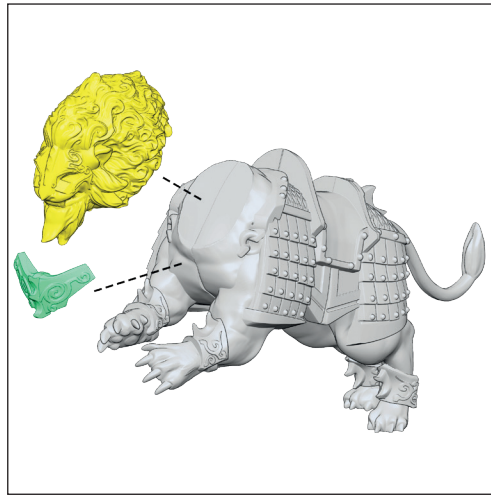
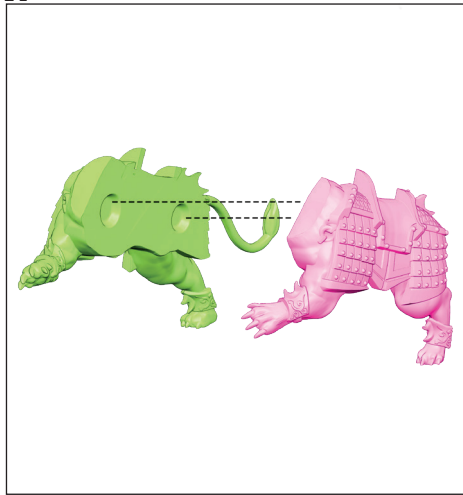
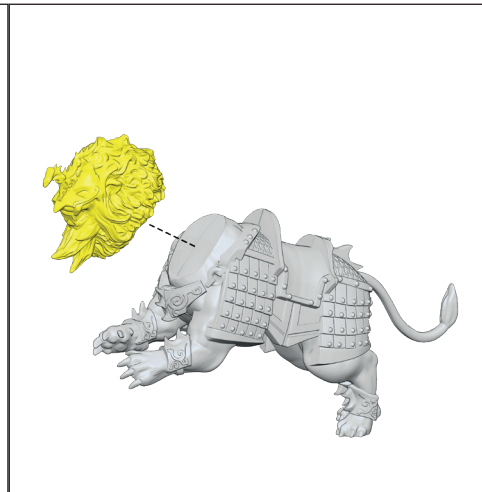
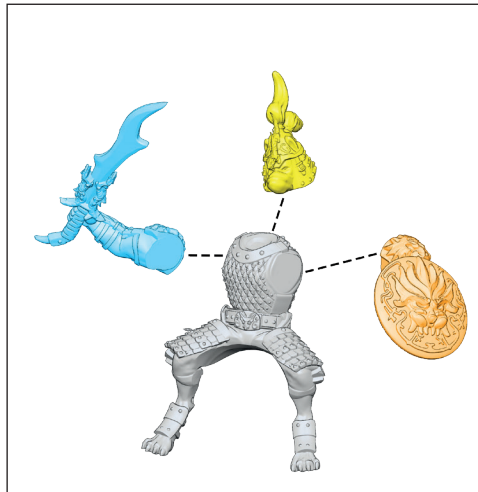


XIRKAALI LIONSNARL CAVALRY

A



Command Option

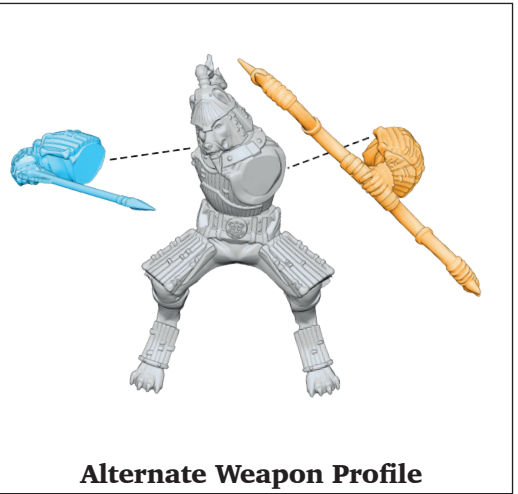
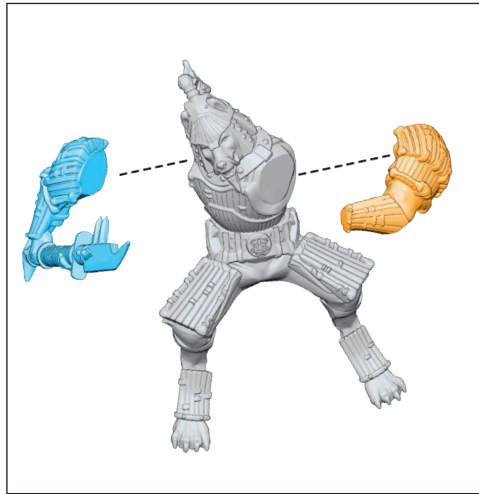
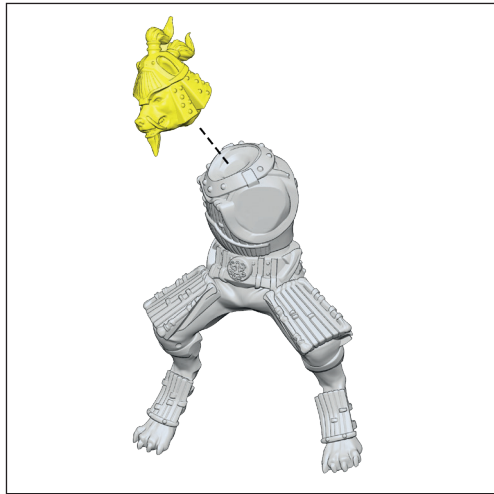
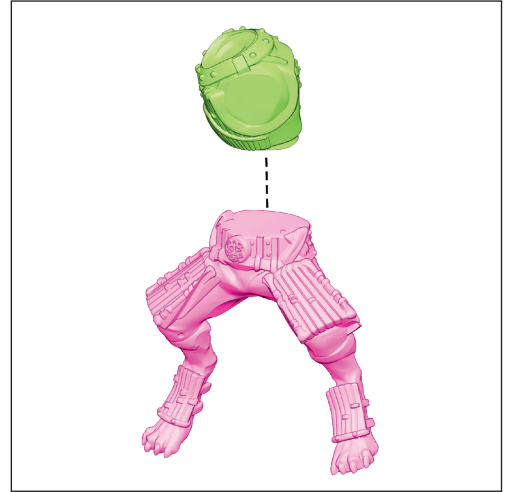
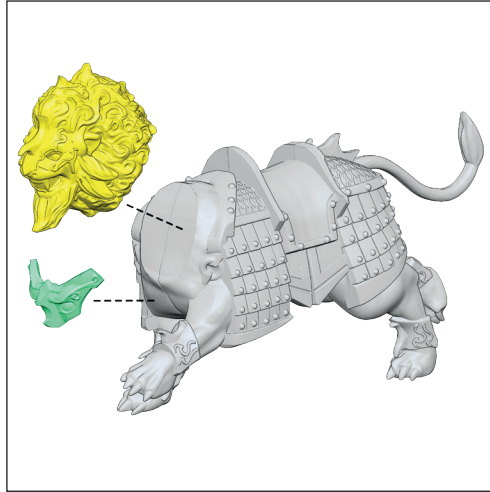
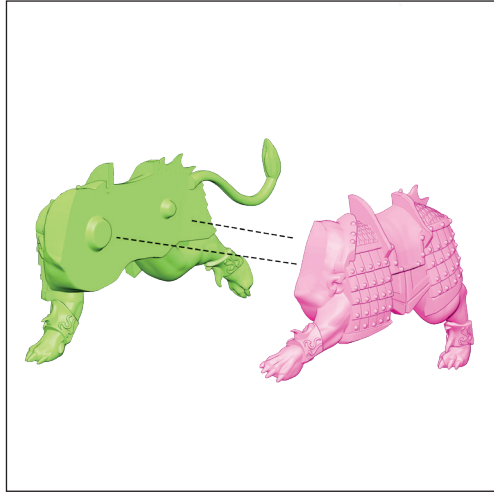


Alternate Weapon Profile

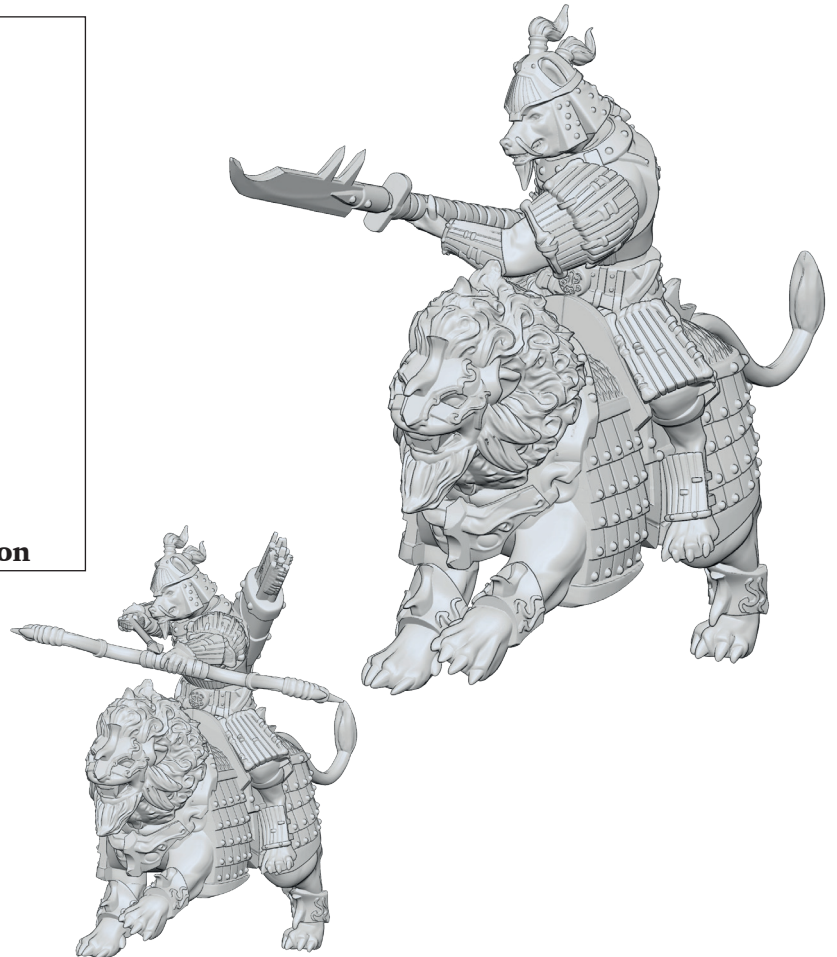
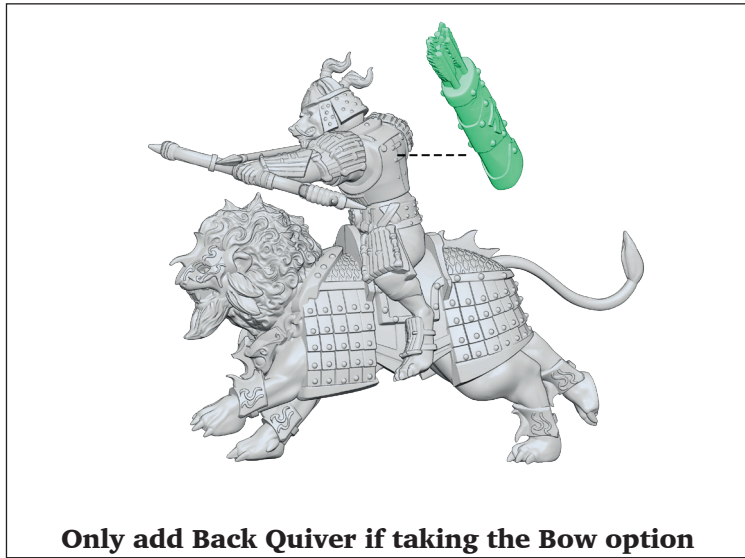
Command Option

XIRKAALI LIONSNARL CAVALRY

B



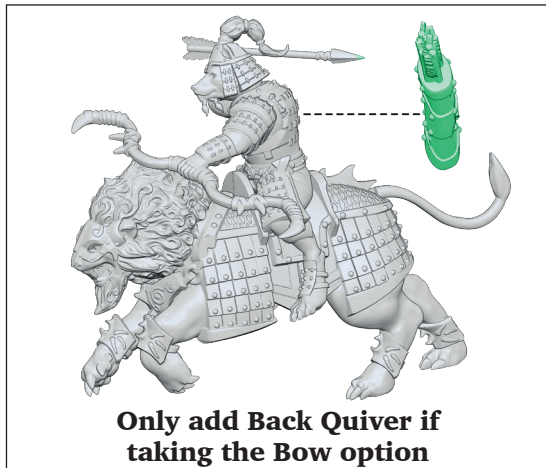
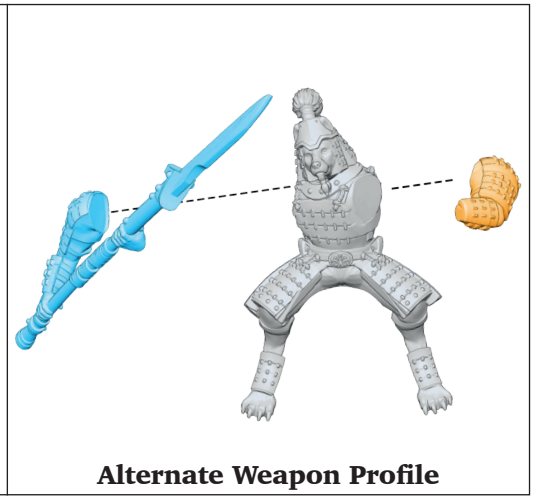
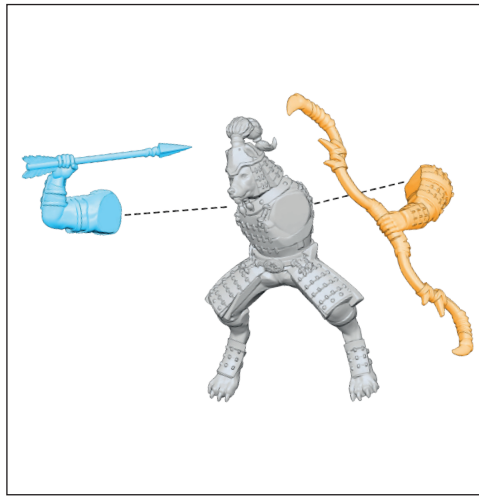
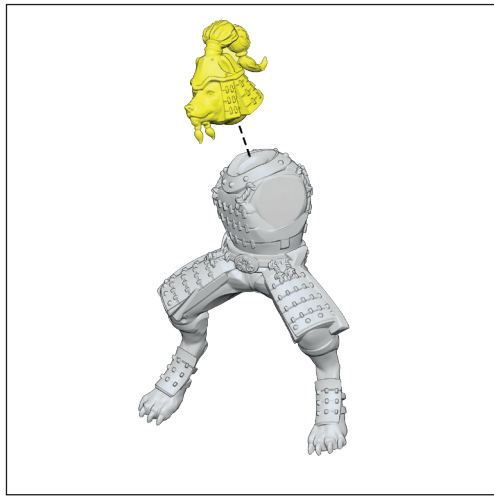
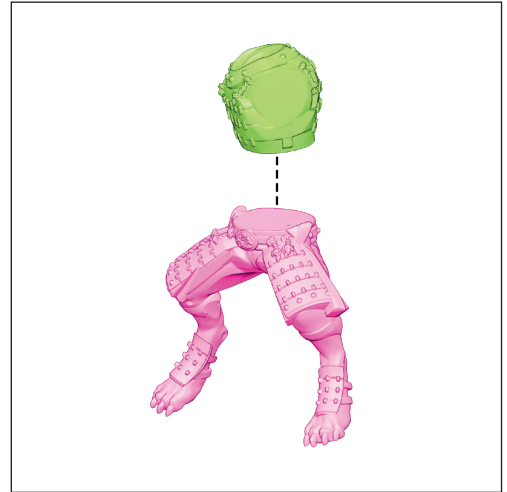
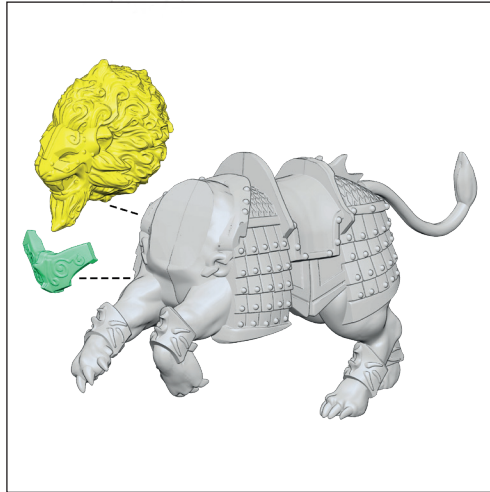
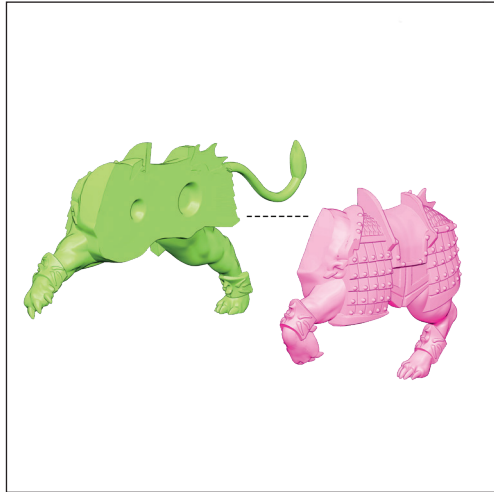
Alternate Weapon Profile



Alternate Weapon Profile

XIRKAALI LIONSNARL CAVALRY

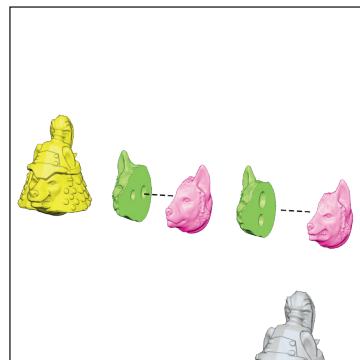
C



Alternate Weapon Profile



3 Lionsnarl models go on a base that is 150x100mm to make a regiment.



Alternate Heads